

# ***Members Handbook***

## ***2025/26***



*Member of:*



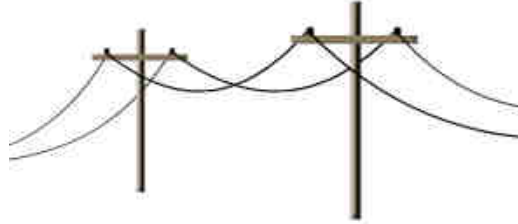
Est. 1947

# ***Dorchester & District***

## *Angling Society*

**Rod Licence Required**



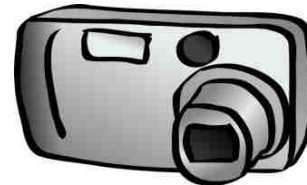


**Beware of Overhead Power Cables**

**Please take your Litter Home**

**'Leave Only Footprints & Take Only  
Photographs'**

**Thank You**



# Contents

## General:

	Page
Constitution .....	5
DDAS Officers & Committee 2025/26.....	8
Society Rules .....	9
Match Rules .....	12
Senior Match Trophies .....	15
2025/26 Seniors Match Programme.....	16/17
DDAS Junior Match Rules & Programme.....	18
Specimen Fish Awards - Rules .....	20
Specimen Fish Qualifying Weights .....	20
Safeguarding, Health & Safety, Risk Management .....	22/23
Exchange Books .....	37
Postcodes for Satnav use .....	47

## Regulation Waters

## Rivers:

	Page
Shillingstone, Child Okeford – River Stour .....	29
Chesil Farm, Little Hanford - River Stour .....	30
Hanford Farm, Hanford - River Stour .....	31
Somerset Levels Association of Angling Clubs (SLAAC) Waters (Langport) - Rivers Parrett, Isle & Brue .....	32

(continued)

# Contents *(continued)*

## Regulation Waters

### Rivers:

	Page
Wool Manor, Wool - River Frome .....	34
Worgret Hill, Nr Wareham - River Frome .....	35

### Lakes:

	Page
Higher Kingcombe Farm – Lodge Lake & 2 Island Lake, Toller Percorum.....	38
‘Our very own’: Luckfield Lake - Broadmayne, Dorchester.....	40
Silverlake – Lysander Lake & Lucy’s Pool - Warmwell, Dorchester .....	42
Revels Fishery - Cosmore, Nr Dorchester .....	46
Sharnhill Green Fishery (Upper) - Alton Pancras .....	48
Harbour Bridge Lakes (concession only) - Coldharbour, Weymouth.....	51
Potwell Lake – Broadwindsor (Nr. Beaminster).....	53

# Dorchester & District Angling Society (DDAS)



[www.d-das.com](http://www.d-das.com)



## CONSTITUTION

### Name & Headquarters

1. The Society shall be called: 'The Dorchester & District Angling Society' (DDAS) and its headquarters shall be at the Weymouth Angling Society (WAS) HQ, Commercial Road, Weymouth, or such other place as may be decided by the Committee.

### Aims & Objectives

1. The Society exists to provide freshwater angling and to that end, to protect the surroundings and wildlife on their waters for the pleasure & enjoyment of their members and guests.

### Membership

1. Full membership shall be available to all applicants, but those who reside outside of Dorset will be ineligible to vote or to serve on any Society committee.
2. Junior and Primary membership will be available in the following categories:
  - a. Youth (Junior) – School Years 7 to 13.
  - b. Children (Primary) – Up to School Year 6.
3. Junior and Primary membership shall continue until the end of the subscription year in which the member is in that school year.
4. Primary members may only fish under the supervision of an adult full member or a paid non-angling parent/guardian (supervision of up to 3 members per adult). Juniors must be under adult supervision wherever water regulations require it.
5. The Society will abide by the Angling Trust's (Angling Development Board's-ADB) Child Protection Policy. The Society Chairperson will act as the Society Child Protection Officer.
6. If the committee becomes aware of the potential for the society to become unviable, the Chairperson, Secretary, Treasurer and Membership Secretary will consult and if necessary, call for an Extraordinary General Meeting (EGM) to discuss and resolve the issues.

## **President and Vice-Presidents**

1. There shall be a President of the Society elected annually at the Annual General Meeting (AGM)
2. The Annual General Meeting may also elect as Vice-President any person who in their opinion has rendered special or distinguished service to the Society or to any person they wish to honour. Vice-Presidents shall be Honorary Members of the Society for the duration of their office.

## **General Meetings**

1. The AGM shall be held in March or April each year on a date to be notified to Full Members at least fourteen days beforehand by email, social media platforms and by Royal Mail.
2. An Extraordinary General Meeting (EGM) may be called at any time by the Secretary on the direction of the committee, or on request in writing from at least twelve eligible Full Senior Members.
3. Any twelve eligible Full Senior Members present shall form a quorum.

## **Officers and Committee**

1. The Society shall have the following officers: Chairperson, Vice-Chairperson, Secretary, Treasurer, Membership Secretary, Match Secretary, Junior Secretary, Membership Secretary, Club Captain and a committee minimum of six (two of the six being the Risk Management Officer (RMO) & Ecology representative. The officers shall be ex-officio members of the committee.
2. The Chairperson shall have a casting vote only.
3. The committee may co-opt other members of the Society to fill vacancies or for special purposes.
4. The officers and committee shall be elected at the AGM.
5. Nominations for office shall be obtained before the AGM. Each officer shall be proposed and seconded. Should there be more nominations than vacancies; election by ballot shall decide the issue.
6. The committee shall manage the day-to-day business of the Society and give effect to the rules. They may make regulations on the use of the Society's water and vary these regulations as and when necessary and all members shall be informed of such changes either by newsletter, Facebook, Club Website, Email and/or by notices in local tackle shops.
7. Trustees: Trustees will be elected by the committee and confirmed by the AGM. There shall be not less than two and not more than three Trustees at any one time. The trustees will be the legal holders of the Society's assets and their duties and responsibilities will be in accordance with the "Declaration of Trust" dated 18 April 2017 or as amended by vote at the AGM.

## **Committee Meetings**

1. The committee shall meet at least once a month at the headquarters or such other places as they may decide.
2. Special Meetings may be called by the Secretary or on direction of the committee. Notice will be given to all committee members.
3. Any six members shall form a quorum. However, if the Chairperson, Secretary, Vice-Chairperson and Treasurer are all unable to attend then the meeting will be re-scheduled.
4. Any officer or committee member who fails to attend three consecutive meetings without reasonable excuse shall forfeit their place on the committee.
5. Motions before the committee shall be decided by a majority vote.

## Finance & Accounts

1. The Society's financial year shall commence on 1<sup>st</sup> April.
2. The accounts of the Society shall be kept by the Treasurer, who will be responsible for receiving all monies due and for making the majority of payments. Minor (cash) payments can be made by the Membership Secretary when/if required, these payments along with a signed 'Expenditure Payment Form' shall be recorded in the Membership Income Log.
3. The Treasurer shall have the authority to make payments in support of the day to day running of the Society. Payments for exceptional items must be approved by the committee.
4. Society funds shall be kept in a current account. The account shall be with a major bank approved by the committee.
5. An income and expenditure account for the year and a balance sheet as at the year's end shall be available at the AGM.
6. Up to Two account verifiers shall be appointed for the coming year at each AGM.
7. The account verifier(s) shall submit a report on the accounts at the AGM.
8. The Treasurer shall, on termination of his appointment, hand over to his successor all monies, books, accounts and other documents and property of the Society.
9. Assets shall belong equally to full Senior Members of five years' continuous membership immediately prior to date. In the event of the Society ceasing to exist for any reason, such assets will be distributed on that basis by the Trustees in accordance with instructions from a Special General Meeting called for that purpose.

## Subscriptions

1. The amount of the annual subscription and any joining fee shall be determined at the AGM for the subsequent year.
2. The subscription for the year begins 1<sup>st</sup> June each year.
3. On a member reaching state retirement age, the annual subscription shall be such amount as is decided at the AGM each year.

## Discipline

1. The committee may reprimand, suspend or expel any member who infringes the rules of the Society, who fishes for coarse fish out of season on waters with a closed season, or who so conducts him/herself as to endanger the welfare or reputation of the Society.
2. No member may be suspended or expelled without being invited to appear before the committee on a stated offence and given the opportunity to explain his/her conduct.
3. A member suspended or expelled shall not be entitled to the return of any subscription paid to the Society. Any member expelled may not fish as a guest.
4. CCTV or Trail cameras are located at some society waters, notices of their siting (but not exact location) are in place to notify people. Any evidence of criminal behaviour, theft, rule breaking etc may be submitted to the Police & could be used as evidence.

# DDAS OFFICERS & COMMITTEE 2025/26

## **PRESIDENT**

*Roger Fullbrook*

## **VICE PRESIDENTS**

*Derek Pride, Stuart Murgatroyd, John Parkes, Mick Brown, Steve Sudworth, David Tattersall.*

## **CHAIRPERSON**

*Chris Watson*

## **VICE CHAIRPERSON**

*Chris Ward*

## **SECRETARY/CLUB CAPTAIN**

*Steve Sudworth*

## **TREASURER**

*Jerry Bracey*

## **MEMBERSHIP SECRETARY**

*Paul Haigh*

## **MATCH SECRETARY**

*Craig Andrews*

## **JUNIORS SECRETARY**

*Graham Howard*

## **COMMITTEE**

*Roger Fullbrook, David Tattersall, Tim Broughton (Carp Sec' / RMO), Mick Brown,  
Si Wagner, Chris Painter (Ecology Rep')*

## **Key Contact 📞 Numbers:**

**Environment Agency (Pollution):** 0800 807060  
**P Haigh (Membership enquiries):** 07827 441233  
**J Bracey (Insurance):** 07725 669124

**C Andrews (Match bookings):** 07921 436243  
**S Sudworth (General):** 07816 175579

## **SOCIETY INSURANCE**

**It is a condition of the society's insurers that any incident involving a member of the society and/or third party on a society water, and in which the insurers have an interest, must be reported to the Hon. Treasurer as soon as possible.**



# SOCIETY RULES

## Change of Rules

1. A notice of motion to affect any alteration in Rules is to be furnished in writing to the Honorary Secretary by 14 days preceding the AGM.

## General Rules

1. All members must conform to the Rules of the Environment Agency (EA) in all respects pertaining to fishing, particularly in possessing the appropriate rod licences.
2. Members must carry their membership cards as a means of identification at all times when on Society, concessionary or agreement waters.
3. NO guns, dogs, fires or radios are allowed where stated. No camping without the owners' permission.
4. **LITTER IS UNTIDY, DANGEROUS TO WILDLIFE & LIVESTOCK. IT MUST NOT BE LEFT ON THE BANK.** Discarded nylon is particularly dangerous. Metal or plastic, disposable bait, food or drink containers must not be taken to the water.
5. No member's vehicle may cross land to the water on any of the Society's holdings except Heath Lake & Sharnhill Lower.
6. Fields laid up for hay must be avoided. Gates and all property must be left as found.
7. No fish may be taken other than by rod and line.
8. All fish caught are to be returned to the water unharmed.
9. Braided lines and barbed hooks are only allowed on society waters when predator fishing. See separate 'Predator Fishing Rules & Regulations' below.
10. It is requested that members do not fish unduly with live bait, but where necessary only three live baits may be used by any one member on any one day. They must be caught by the member live baiting and must be used in the water were caught and not taken to other waters. This will avoid the danger of passing any disease to other waters.
11. Any member having a complaint to make must do so in writing to the Secretary within 48 hours of the alleged occurrence.
12. **KEEPNETS:** Some restrictions are in place, see each individual '**Regulation Water**' Rules for details.
13. Fly-fishing and spinning (lures are permitted) is PROHIBITED at Wool & Worgret. No gaffs to be carried at both stretches.
14. The committee may institute a Day Ticket Scheme at their discretion.
15. The construction and use of keepnets, sacks and landing nets used by members must comply with the Environment agency regulations and bylaws current at the time of use.

## Fishing Guests

1. Guests shall fish with senior members only, who shall be responsible for paying the current guest fee. He/she shall also be responsible for ensuring that the guest is familiar with any special conditions applying to the water being fished, as well as the club rules. Members are reminded that their guests should hold an appropriate rod licence.
2. Members must obtain Guest Tickets before fishing. Tickets can be obtained electronically via the Clubmate App or by contacting.
3. Guests will normally be limited to two, per member, per day.
4. Children up to the age of 10 may be taken by a parent member to a Society water at no charge.

5. Members are only allowed to take guests on club exclusive waters, a day ticket must be obtained from the Fishery owner at any 'shared' (day ticket) waters.
6. Only Full and Junior Members are entitled to fish alliance/federation waters. (Juniors must be accompanied by a senior member).

### **Regulation Waters**

1. See individual regulation waters in this handbook.

### **Exchange Books**

1. See Exchange Books section in this handbook.

## **Predator Fishing Rules & Regulations**

### **General Rules**

1. An unhooking mat of at least 24" in length must be carried. (This can be a lightweight roll mat).
2. Two pairs of forceps or pike disgorgers of at least 12" in length and cutters/pliers must be carried.
3. A landing net of no less than 24" from front to back (at the spreader block) must be used. For roving anglers an acceptable foldable net size of at least 65cm by 50cm is to be carried.
4. A large weigh sling must be carried at all times to recover fish before release.
5. Pike gags or gaffs are NOT to be used at any time.

### **Bait Fishing Rules**

1. Anglers must use a wire trace of at least 30cm in length with a breaking strain of at least 15kg (33lb) (Single strand or plastic covered only). These traces must be shop bought and of reputable quality. Sub-standard cheap traces can harm pike if they get wrapped up, hence why they are not allowed.
2. Treble hooks must be barbless on at least 2 of the hook points with a maximum hook size of 4.
3. Braided main lines may be used but only with a 1 metre mono/fluorocarbon leader of at least 35lb breaking strain.
4. When bait fishing for Pike, no more than one rod is to be used at any one time, unless accompanied by a fellow angler, then a maximum of 2 may be used.
5. The use of live bait is not encouraged but if used, a maximum of 3 fish from the water you are fishing at are to be used, to a maximum of 6" of length. This is also subject to Roach only. Please ensure live baits are lipped hooked only, this will enable the fish to be released if not taken.

**Anyone found carrying fish to or from a water or holding more or bigger fish than stated will face disciplinary action by the committee.**

## Lure Fishing Rules

1. Lure Anglers fishing for Pike must use a wire leader of minimum, 6lb breaking strain. These leaders must be shop bought and of reputable quality. Sub-standard cheap traces can harm pike if they get wrapped up, hence why they are not allowed.
2. If specifically Perch fishing, you are not required to use a wire leader.
3. Lures with single or treble hooks must **be barbed**, (if fishing dead bait techniques, barbless hooks must be used). Barbed single hooks are also acceptable with drop-shot or jig head techniques. If an assist treble (only one allowed) is used, they must be also be barbed.
4. Braided lines can be used but must be a minimum of 15lb breaking strain.
5. Only one rod can be used whilst lure fishing at any time.
6. There is a strict no spinning rule on the River Frome at all times, lure fishing is permissible.

## Pike Handling Tips:

1. Rods are NOT to be left unattended under any circumstances. If you decide to leave your swim for any reason, reel in, it only takes a few seconds for a pike to swallow a set of hooks. It is unfair to ask or expect another angler to attend your rods whilst you are away. He has his own tackle to deal with and whilst looking after yours he could have his own unattended baits gorged by a pike.
2. NEVER wait for a second run. Strike as soon as you are sure that the pike has the bait in its jaws. Although conditions may differ, always assume that the pike is of reasonable size and strike sooner than later. A pike missed is preferable to a deep hooked one. Remember, deeply hooked pike not only suffer damage from the hooks but also from the extra time it takes to get them returned to the water.
3. Handle all Pike with the utmost care. On landing, lay it on an unhooking mat, NEVER on uncovered hard ground.
4. NEVER use a Pike gag when unhooking. Use the forceps and hand technique. Laying the pike on its back and firmly holding its lower jaw (through the gill cover, avoiding the gill rakes) with one hand and removing the hooks with the other. Always be especially careful when you find it necessary to insert the forceps behind the gill covers. At all times, make sure the fish is held firmly. Please do this with great care and preferably under instruction if for the first time. With lively fish it is often easier to unhook the fish by kneeling astride it.

**If the hooks are difficult to get out, do not cut the trace, unclip it. Put the pike in the landing net and into the water. Then seek help from another pike angler, do not feel embarrassed, we have all been there.**

5. Always ensure that the pike can support itself before releasing your grip on it. If it has difficulty staying upright it will need careful nursing to recover. Stay with the fish for as long as it takes for it to maintain its balance unaided. A fully recovered pike will swim steadily away.

# Grayling Fishing Guidelines

**This set of guidelines is a “common sense” approach with fish care in mind and have been taken from the Grayling society website.**

## **Fish Handling**

Always wet hands before touching fish. Do not use a cloth/rag to hold/un-hook the fish. Always use a landing net or un-hook in the water if possible. Avoid lifting fish out by the mouth. Always carry forceps and a disgorger and use with care, Grayling can often be greedy feeders!

## **Returning a Fish**

Returning Grayling safely after a long hard fight is essential to maintaining our fish stocks. Contrary to popular belief, large fish take longer to recover than small fish, when returning fish; hold them gently facing up stream until the fish is ready to swim away, be aware this may take a number of minutes **DO NOT** be tempted to rush the fish they will turn belly up!

If you are going to take a photo, please rest the fish in your landing net, in the water whilst you get yourself ready, ensuring it is kept out of the water for the minimum time.

## **Tackle & Methods**

Feeder fishing is allowed but due to the danger of “deep hooking” would not be considered “purist tactics” Always strike on first signs of a bite in order to prevent deep hooking. Trotting (float fishing) with either maggot or corn would be the favoured method. All methods must be used with barbless hooks.

# MATCH RULES

1. The Match Secretary, or his nominated Deputy for the day, has complete authority for the match on the day.
2. No competitor may disturb the water in any manner before the starting signal except for positioning the keepnet, mixing groundbait, plumbing the depth and shottng floats.
3. All competitors in senior club matches must be bone fide members of the Society.
4. Members wishing to take part in matches must inform the Match Secretary by 9.00pm on the Thursday prior to the match. Members who enter a match but do not take part without informing the match secretary may still be liable for payment of their entry fee and will not be able to book in for the next match until 5pm on the Thursday prior to that match.
5. The entry fee for club matches shall be determined by the committee. This fee, less 10% will be available for payout unless prizes are available.
6. Cup matches shall be pegged. No member shall be permitted to re-draw. Other matches may be roving at the discretion of the committee.
7. The draw for matches will take place at a suitable time before commencement of the match to allow matchmen adequate time to fully prepare.
8. All competitors must fish from the bank and within one yard of their peg.
9. Competitors may only use one rod, one line and one hook at one and the same time. Any bait may (unless bait bans apply) be used except spinning tackle or live or dead fish.
10. A maximum of 16 metres of pole length (in hand) only is allowed in all DDAS matches.

11. It is the competitor's responsibility to see that his/her fish are weighed live at his/her peg and returned carefully.
12. Pike or game fish are ineligible in matches.
13. Competitors must hook, play and land their own fish.
14. Game fish accidentally hooked must be handled carefully and returned to the water immediately.
15. When a competition is in progress, no competitor may approach another within ten yards without permission and then only from the rear.
16. Complaints of unfair conduct must be made immediately to the Match Secretary.
17. All competitors must stop fishing immediately the signal to stop is given, except if already playing a fish, in which case the call 'Fish on' is to be announced at the signal to stop. A further 20 minutes is permitted to land the fish.
18. The Match Secretary has discretion to postpone a match either before or on the day of the match.
19. A match may not be abandoned within the first hour or when a competitor has caught a fish.
20. When a match is abandoned, or postponed, the reserve date shall apply; your original entry stands and the match will be redrawn. If you do not wish to fish the match on the reserve date, please cancel your entry. If the match cannot be fished on the reserve date, then all members shall be notified of the new date and must re-enter for the match in the usual way.
21. Except where they are in conflict with the Society's rules, NFA rules will apply in matches.
22. Competitors are responsible for clearing all litter from their peg. Failure to do so will result in not being weighed in until it is cleared up.
23. Keepnet Limits: A maximum weight of 60lb per net is permitted, if you weigh over 60lb, but below 70lb, you will only record 60lb. If you weigh over 70lb, you will lose the total net weight. If a fishery net rule is 'less' than stated, we will follow their rules (this rule applies to all fish species).

## Points and Handicap System

1. Points are awarded in club competitions: 1<sup>st</sup> – 20 points, 2<sup>nd</sup> – 19 points and so on. The competitor with the highest number of points at the end of the season based on his 8 best results from club matches, deemed to carry a point's value, shall be the winner. In the event of a tie, each competitor may choose his 8 best weights from the qualifying matches.
2. The handicap shall be determined by the results of the 12 previous point's matches of the season. Only competitors fishing at least 6 out of these 12 matches will be eligible for a handicap concession; other competitors may enter starting at zero.
3. A table will be kept in the same way as the point's cup, 20 for 1<sup>st</sup>, 19 for 2<sup>nd</sup> and so on. The result will be determined by adding the points gained in this to the concession already gained by the competitor and the competitor with the most points after this will be the winner. In the event of two or more competitors having the same number of points after the concessions have been added, the competitor with the lesser concession will be the winner. The result of this match does not count towards the point's cup.

**Aldermaston Cup:** This cup is awarded to the member with the highest aggregate points for the first and second round matches. Aggregate weight will decide if the points are tied.

**Ladies Rose Bowl:** The person accompanying a lady competitor may assist by baiting, netting and unhooking any fish caught.

### **Dewlish Pairs Cup:**

1. Entries for the match must be nominated pairs.
2. The match will be fished as two separate sections and decided on points. The winning pair will have the lowest aggregate number of points.
3. The draw for pegs will be from 2 separate bags.

**Eric Sherwood Cup:** To be fished for annually using a Knockout system or 3/4/5 match evening series during the club match season.

**C&S Locksmiths Winter League Trophy:** To be fished for annually using a 4 from 5 or 3 from 4 match winter series during the club match season.

### **ALL Members - Please Note:**

Members are advised to check the Senior Members Match Programme prior to planning a pleasure fishing session, as the club venues will be closed on match days, but only until completion of the match.

Match venues are subject to change at short notice, notification of any short notice changes (*normally due to adverse weather*) will be placed on the DDAS Website at the earliest opportunity.

Venues are NOT closed before the Friday evening series of matches, but pleasure anglers are requested to vacate their peg on these days by 4.30pm.

### **Matchmen – Please Note:**

Standard Match fee: **£10.00** (*subject to change*). A small percentage of the fees from each match will be taken to help pay towards trophy engraving, any excess will be used to pay towards pegging fees at future matches.

Please book in for matches before 9pm on the Thursday before the match date via the **DDAS Matchmen WhatsApp group** or after the next match has been advertised by the match sec' on that group.

Note: As some venues have limited pegs available, those booking in first on the App will take precedence (1<sup>st</sup> come, 1<sup>st</sup> served) email: [matchsec@d-das.com](mailto:matchsec@d-das.com) or WhatsApp Craig on 07921 436243 to be included in the group. **Please state your name in the message.**

Alternative venues for matches affected by adverse weather will be notified at book in/or at the earliest opportunity thereafter on the group.

Matches on non-club waters may require the purchase of a day ticket or pegging fee in addition to the standard match fee.

# SENIOR MATCH TROPHIES

Maurice Shaw Trophy  
Mike Park Stour Cup  
Chairman's Cup  
Jeffery Trophy  
Bastick Cup  
Holmfirth Trophy (over 50s)  
The Costa® Cup  
Committee Shield  
Park Street Specimen Cup  
C&S Locksmiths Winter League Trophy\*\*\*\*\*  
Denning Trophy  
Carp Competition Trophy (36 hrs)

Aldermaston Cup\*  
Ladies Rose Bowl\*\*  
Dewlish Pairs Cup\*\*\*  
Terry Hatcliffe Trophy  
Scuffel Cup  
President's Cup  
Grayling Shield  
Eric Sherwood Cup\*\*\*\*  
Handicap Cup  
Points Cup  
Chickerell Cup

**\*Aldermaston Cup:** This cup is awarded to the member with the highest aggregate points for the first and second round matches. Aggregate weight will decide if the points are tied.

**\*\*Ladies Rose Bowl:** The person accompanying a lady competitor may assist by baiting, netting and unhooking any fish caught.

**\*\*\*Dewlish Pairs Cup:**

1. Entries for the match must be nominated pairs.
2. The match will be fished as two separate sections and decided on points. The winning pair will have the lowest aggregate number of points.
3. The draw for pegs will be from 2 separate bags.

**\*\*\*\*Eric Sherwood Cup:** To be fished for annually using a 4/6 match Friday evening series during the club match season.

**\*\*\*\*\*C&S Locksmiths Winter League Trophy:** To be fished for annually using a 4 from 5 or 3 from 4 match winter series during the club match season. These matches can be fished on an individual basis (no need to enter the league).

**The match trophies will be engraved with the winners name each year, they will be presented to the winners at the AGM and displayed in the trophy cabinet at the Weymouth Angling Society HQ for all to see.**

# 2025/26 SENIORS MATCH PROGRAMME

**PLEASE NOTE:** ALL DATES & TIMINGS ARE SUBJECT TO CHANGE AT SHORT NOTICE

DATE	VENUE	DETAILS	DRAW	FISH
13 Apr	Todber (Whitepost top)	Pre-Season Open	0900	1030-1630
23 May	Revels (Trendals & DT)	Eric Sherwood Cup 1 <sup>#</sup>	1615	1700-2100
25 May	Luckfield Lake	Committee Match	0900	1015-1615
1 June	Whitemoor (Canal Only)	Aldermaston Cup 1 <sup>**</sup>	0900	1030-1630
6 June	Revels (Trendals & DT)	Eric Sherwood Cup 2 <sup>#</sup>	1615	1700-2100
14-15 June	Away Dayz: Goodiford Mill	Afternoon match 14 <sup>th</sup> BBQ & social o/c, camping on site. Breakfast, Chairman's Cup match/fish on the 15 <sup>th</sup>		
20 June	Revels (Trendals & DT)	Eric Sherwood Cup 3 <sup>#</sup>	1615	1700-2100
22 June	Revels (Main)	Costa Cup <sup>**</sup>	0900	1030-1630
4 July	Revels (Trendals & DT)	Eric Sherwood Cup 4 <sup>#</sup>	1615	1700-2100
6 July	Avalon (Moors Lake)	YTBD	0900	1030-1630
13 July	Hbr Br (Charlotte Lake)	Dewlish Pairs	0900	1030-1630
18 July	Luckfield (1-5 & 6-10)	Eric Sherwood Cup 5 <sup>#</sup>	1615	1700-2100
18-20 July	Jimmys Lake, Orchard	Carp Competition (see*** below)	Draw:1800 Fri, Fish 1900-1700 Sun	
27 July	Todber (Whitepost top)	Denning Trophy <sup>**</sup>	0900	1030-1630
1 Aug	Luckfield (6-10 & 1-5)	Eric Sherwood Cup 6 <sup>#</sup>	1615	1700-2100
17 Aug	Revels (main lake)	Maurice Shaw Trophy <sup>**</sup>	0900	1030-1630
31 Aug	Lysander Lake	Chickerell Cup <sup>**</sup>	0900	1030-1630
7 Sep	Whitemoor (Canal)	Terry Hatcliffe Trophy <sup>**</sup>	0900	1030-1630
21 Sep	Hanford Farm>>	Aldermaston Cup 2 <sup>**</sup>	0900	1030-1630
28 Sep	TBC	TBC		
5 Oct	Revels (2 lakes)	Over 50s Cup (& all comers)	0900	1030-1600
12 Oct	Todber (ASH)	President's Cup <sup>**</sup>	0900	1030-1600

(continued over)



## 2025/26 SENIORS MATCH PROGRAMME (continued)

DATE	VENUE	DETAILS	DRAW	FISH
26 Oct	Sutton Bingham (Max 12)	Silvers Only ( <i>no carp allowed in nets</i> )	0900	1030-1600
2 Nov	Wool, River Frome	Grayling Shield	0900	1015-1515
9 Nov	Hbr Br (Charlotte Lake)	Jeffery Trophy**	0900	1015-1515
23 Nov	Luckfield Lake (TBC)	Bastic Cup**	0900	1030-1600
7 Dec	Hanford Farm>>	Mike Park Stour Cup**	09000	1015-1515
21 Dec	Revels (All lakes)	Christmas Match & Ladies RB	0900	1015-1515
<b>2026</b>				
4 Jan	Viaduct (Campbell)	TBC	0900	1030-1600
11 Jan	Hanford Farm>>	C&S Locksmiths WL 1*/**	0900	1015-1515
18 Jan	Revels (main)	Scuffell & Handicap Cups	0900	1015-1515
1 Feb	Viaduct (Campbell)	Blind Pairs	0900	1030-1600
15 Feb	Revels	C&S Locksmiths WL 2*	0900	1015-1515
1 Mar	Lysander Lake (TBC)	C&S Locksmiths WL 3*	0900	1015-1615
15 Mar	Viaduct (Campbell)	C&S Locksmiths WL 4*	0900	1030-1600
TBC	Todber Manor (Ash)	TBC	0900	1015-1615
29 Mar	Revels	C&S Locksmiths WL 5*	0900	1015-1515

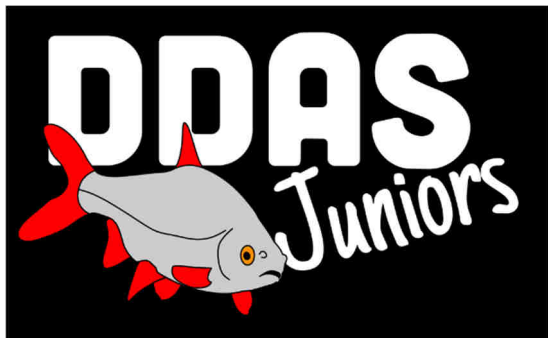
Book in asap for the Friday evening series matches. Maximum of 10 anglers (first come, first served), 5 from 6 matches to count on a point's basis. The £20 fees for the series is required to be paid at the first match.

\* C&S Locksmiths Winter League (WL): 4 from 5 matches to count on a point's basis. Match fees for the series (*if required*) to be paid in full at the first match. No requirement to be in the league to fish these matches.

\*\* Points matches (8 from 12). Draw & fish times are subject to minor amendment.

\*\*\* **Carp Comp'**: Please contact Tim on: 07876504924 or [discovery66@live.co.uk](mailto:discovery66@live.co.uk) for more details.

>> If in flood: will be fished at a lake – Venue TBC.



Please visit [www.ddasjuniors.co.uk](http://www.ddasjuniors.co.uk) for much more detailed information

## Event/Match Rules & Programme

Junior anglers will adhere to the senior match rules stated in this handbook with the exception of those stated in the juniors rules section here: <https://www.ddasjuniors.co.uk/junior-match-rules>

Points awarded as follows:

1<sup>st</sup> 25pts, 2<sup>nd</sup> 20pts, 3<sup>rd</sup> 17pts, 4<sup>th</sup> 15pts, 5<sup>th</sup> 14pts

Down to 1pt for 18<sup>th</sup>

Note. If points are drawn, the winner will be declared on accumulated weight over the season.

1. Catches of silverfish shall be recorded over ALL points matches and will count towards the Junior Silverfish Champion Trophy.

### Junior Clothing

Visit the [DDAS Juniors](http://www.ddasjuniors.co.uk) website for details on club clothing for Junior members.

#### Junior Trophies:

Junior Championship Trophy  
Junior Championship Runner-up Trophy  
Junior Knockout Championship  
Junior Silverfish Champion Trophy  
Junior Pairs Trophy  
Junior/Senior Pairs Trophy  
\*Junior Specimen Award  
Martin Vine Memorial Match Winner  
Alan Hilton Cup  
Christmas Match Winner  
Most Improved Newcomer Award

\*Fish caught during Junior events only will qualify for that award

# 2025 JUNIORS MATCH PROGRAMME

Visit the [DDAS Juniors](#) website for detailed information on the programme for Junior members.

**PLEASE NOTE:** ALL DATES & TIMINGS ARE SUBJECT TO CHANGE AT SHORT NOTICE

## May:

3rd - Junior Pairs Points Match - Whitemoor Canal  
9th - Friday Knockout Round 2 - Revels Stock Pond  
17th - Carp Coaching - Luckfield  
31st - Open Day - Todber Manor

## June:

7th - Junior Points Match - Orchard Lakes  
13th - Friday Knockout Round 3 - Revels Stock Pond  
21st - Coaching - Guest Coach? - Todber Manor

## July:

5th - Carp Coaching - Revels/Silverlake? (TBC)  
11th - Friday Knockout Round 4 - Revels Stock Pond  
19th - Junior Points Match - Orchard Lakes

## August:

2nd - Open Day - Revels  
8th - Friday Knockout Round 5 - Revels Stock Pond  
16th - Coaching - Luckfield  
30th - Junior Points Match - Todber Manor, Hillview Lake

## September:

5th - Friday Knockout Final - Revels Stock Pond  
13th - Senior/Junior Pairs Points Match - Whitemoor Canal  
27th - Junior Points Match (Silverfish) - River Stour (TBC)

## October:

11th - Rotational Pairs Match - Harbourbridge  
25th - Junior Points Match - Chester's Lake, Whitemoor

## November:

1st - Junior Points Match - Campbell Lake, Viaduct  
15th - Junior Points Match (Silverfish) - Harbourbridge  
29th - Junior Christmas Match - Todber Manor, Hillview Lake.

For Junior Fixtures in the early part of 2026, please refer to DDAS Juniors Website & Facebook page or contact the Junior Secretary for details.

# SPECIMEN FISH AWARDS

## RULES

1. All entries must be caught on society waters by fair means and the catch ratified in one of the following ways:  
By one club member, or:

If no club member present, by 1 independent witness, or;

If caught in a recognised match, verified by a match steward.



2. If not weighed in a match, the scales may be required to be verified against the DDAS scales.
3. The specimen/record fish will be eligible if caught on:
- i. A society controlled water (river or lake);
  - ii A society shared water (ie: Exchange book water, commercial water that the society has access to).
4. The Specimen weights will be published in the society membership book.
5. Completed specimen fish entry forms should be sent to the society membership secretary, scanned and emailed to [membershipsec@d-das.com](mailto:membershipsec@d-das.com) or left at the bar in the Weymouth Angling Society HQ, Commercial Rd, Weymouth. Copies are also available for download on the DDAS website.
6. All entries received which achieve 100% of qualifying weight will receive a specimen fish lapel pin badge.
7. The overall best specimen, caught on society waters will receive the Specimen Cup. This Trophy is open to all species and will be compared as a percentage of Specimen weight.
8. The Specimen season will run for 12 months from the 1<sup>st</sup> June to 31<sup>st</sup> May.
9. Any Species caught that is not on the list may be entered and will be judged as a % of the British record.
10. The awards will be presented at the AGM / Presentation evening each year.

## **SPECIMEN FISH QUALIFYING WEIGHTS**

BARBEL	6lb
CHUB	4lb
CRUCIAN CARP	2lb
GRAYLING	2lb
PERCH	3lb
RUDD	1lb
BREAM	4lb
CARP (all)	17lb
DACE	8oz
PIKE	15lb
ROACH	1lb 8oz
TENCH	4lb
EEL	2lb

## **CURRENT CLUB RECORDS (caught at club venues)**

2oz	Luckfield, 2018
5lb 5oz	Hanford Farm, 2017
2lb 11oz	Kingcombe (lower) , Pre 2010
3lb 7oz	Wool, 2016
4lb 1oz	Heath Lake, 2017
1lb 9oz	Harbour Bridge, 2018
7lb 2oz	River Frome, Wool, 2019
26lb 4oz	Luckfield Lake, 2019
13oz	Wool, Pre 2010
21lb	Shillingstone, Pre 2010
2lb 15oz	Hanford Farm, Pre 2010
9lb 1oz	Luckfield Lake, 2017
5lb 11oz	Luckfield Lake, 2017

# SAFEGUARDING

## Children, Young People & Vulnerable Adults in Angling

The following links provide details on the Safeguarding policies that DDAS are committed to.

<https://anglingtrust.net/safeguarding/concerns/>

<https://anglingtrust.net/safeguarding/safeguarding-policies/>

<https://anglingtrust.net/safeguarding/parents-guidance/>

<https://anglingtrust.net/safeguarding/guidance-for-young-people/>

These documents are also available to view on the Society website:

[www.d-das.com](http://www.d-das.com)

# HEALTH & SAFETY / RISK MANAGEMENT

## GENERAL INFORMATION

The DDAS Committee regularly check the waters where we have fishing rights and will carry out work to minimise risks that may affect members when fishing.

The very nature of the sport of angling carries with it some degree of risk, taking place as it does, beside water and in the countryside the society will endeavour to minimise these risks but members who fish our waters should also minimise the risks to themselves and others by following guidelines from the society and angling bodies such as the Angling Trust.

Below is a set of guidelines set out by DDAS and although not exhaustive, form part of the society Health & Safety (H&S) and Risk Assessment (RA) policy.

## Hazards & Risks

Natural hazards, such as; unsafe/damaged trees, bank erosion, uneven/rutted pathways, weirs etc.

Danger to persons caused by livestock and claims for liability where livestock have been allowed to stray due to negligence of a member of the angling society tenant.

Unsafe banks, stiles, gates, fences, barbed wire, fishing platforms.

Danger from overhead power lines and the risk of injury or death caused by lightning particularly when using carbon rods and poles.

Risk of contracting Weil's Disease (see separate guidance) or other waterborne infections.

Physical assault by anti-angling fraternity.

Injury to others arising from the use of poles, back casting etc.

(continued)

## **Hazards & Risks** (continued)

It is impossible to list all possible hazards and the risks involved and not all those detailed are appropriate or necessary in some circumstances, but the society will make efforts to take due care and attention on these matters to be of benefit to members and others.

Some fishing pegs are numbered on our waters and members are asked to fish from these points, some of these, on the river especially are more difficult than others. Members are asked to be aware of their own ability to fish at these points and take necessary precautions to avoid injury or accidents.

### **Guidelines for fishing all society waters:**

Fishing to be from swims/pegs or platforms provided.

Anyone wading should wear suitable lifejacket or buoyancy aid.

Members choosing to fish at difficult points (pegs) should be aware of their own ability and have means of self-rescue and buoyancy aids if they get into difficulty.

Before fishing, inform another person where you are fishing and at what time you can be expected to finish or return.

Carry a mobile phone when fishing to get assistance if required.

Be aware of any overhead power lines whilst fishing or walking with equipment.

All Risk Management information and records are available from the society Risk Management Officer (RMO) on request.



# WEIL'S DISEASE

## Causes of infection

Infection is always caused by exposure to the bacteria that have been shed by an infected animal, and in 90% of cases it will be their urine. The usual route is via water that is subsequently drank or used for recreation such as angling.

The bacteria have to physically enter your bloodstream in order to cause an infection, and as they cannot easily penetrate dry undamaged skin, they can only enter at certain locations - injuries where the skin is broken are the obvious places, but also mucous membranes lining the airway, mouth and lungs. So breathing in or swallowing bacteria is a risk.

Dry unbroken skin is a perfect barrier against the bacteria, but cuts and scrapes need only be tiny for the bacteria to find an entry point.

## What are the chances of catching this infection from my local River or Lake?

On average in the developed world (Europe, mainland USA, etc.) about 20% of feral rats carry strains of leptospira that could cause illness in humans. It's sensible to assume that on average 10% of all freshwater sites are infectious, with more probability for sites which stand good chances of hosting rats nearby i.e. urban lakes and canals and those lakes near farm buildings. Obviously any site with a high-water throughput (such as a river) is less of a risk than stagnant water, as rodent urine will be diluted by the flow. **Any water treated with chlorine or UV-sterilisation will be totally safe.** This means that swimming pools, and many municipal water fountains and architectural features, are usually of no risk in terms of leptospirosis.

The chances that being exposed to contaminated water would lead to infection depends on what you do in the water. To become infected you must actually allow water to enter your body, though that could be as simple as through an open cut, or by licking a finger. Swimming is the highest risk activity as there is no way to prevent some ingestion and skin contact, though other activities such as fishing can also present risk.

Anglers using potentially contaminated sites should wear splash proof clothing and maybe gloves. **Anglers are at higher risk as it is reasonably common to cause minor cuts with hooks, knives and the like, and this greatly increases the ease by which the bacteria can enter the body.**

It's important for anglers to remember that water can enter the mouth via the hands even without immersion. Sensible hygiene should be followed and broken skin covered with waterproof dressings.

## MANUAL HANDLING

Low back pain occurs with the same frequency in people with sedentary occupations as those in heavy labour.

Musculo-skeletal disorders have an estimated annual cost in the region of £3 billion and account for 30 million lost workdays each year.

Smokers are more likely to suffer back pain than non-smokers.

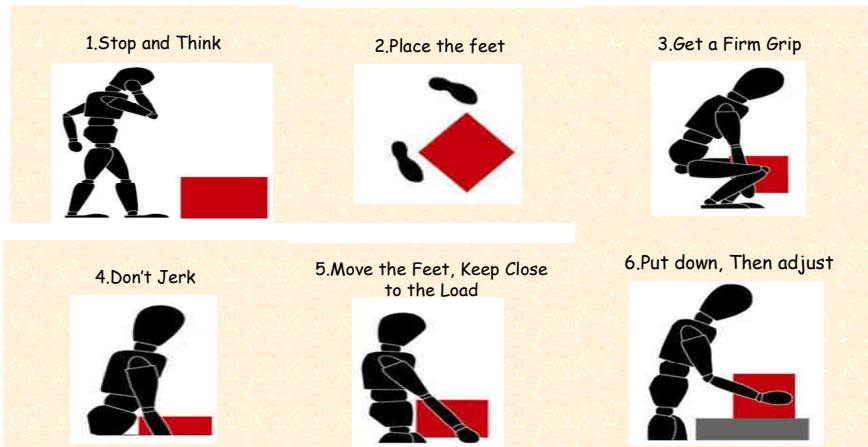
Being overweight increases the likelihood of back pain.

Age doesn't necessarily make any difference;, bad backs affect people of all ages.

Poor handling techniques when you are young will contribute to problems in later life.

Those who have suffered from a back injury are three times more likely to suffer injury again.

### HANDLING PRINCIPALS



**Stop! – Think! - Do you really need to be taking so much tackle?**

# **WATERHESIL BAIT 'N' TACKLE**

77 Portland Road, Weymouth, Dorset, DT4 9BE Tel: 01305 764222

**Open 7 Days A Week**

**Stocking lures for all you  
Freshwater Predator Needs.**

**We can also offer items to order from  
top brand names like:**

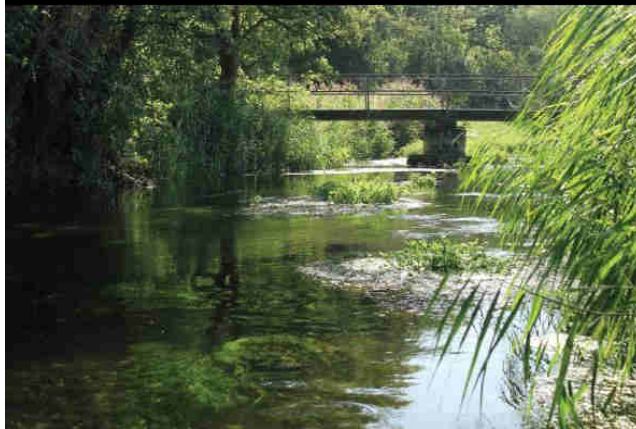
**Prologic, JRC, Greys, Chub,  
Century, Sonik, Shimano.**

**Dont forget we will match online  
prices when possible.**

**Full Sea Fishing  
Ranges Stocked**

**DDAS Members can now get  
15% discount on production of members card.  
(Offer excludes Bait and S.O.Marked items)**

## **CASTERBRIDGE FISHERIES LTD**



Exclusive Chalk Stream Fly Fishing and self catering accommodation in Dorset.

We have the use of eight delightful beats here in Dorset.

Stunning fishing for Brown Trout, Grayling, Salmon, Sea Trout and also the chance of a large Chub or Pike on the fly.

Guiding and Tuition available.

Please take a look at our website

[www.chalkstreamflyfishing.co.uk](http://www.chalkstreamflyfishing.co.uk)

Or telephone for a chat - JOHN APLIN 01305 257490  
MOBILE 07889 680464



**todbermanor.co.uk**

**11 Well Stocked Lakes**

**Massive Tackle Shop (on site)**

**Mail Order Available**

**Please visit their  
website for up-to-  
date information  
todbermanor.co.uk**



## Casterbridge Fisheries Ltd

Water Management for Fisheries Recreation and Conservation

*Established 1985*

### *River Lake and Pond Specialists*

We are an established Company, specialising in all aspects of water, fishing and fishery management.

- Advisory Visits
- Bank Revetment
- Construction
- Electric Fishing
- Environment Agency Consents
- Environmental Monitoring
- Feasibility Studies
- Fencing
- Gravel Washing
- Habitat Improvement
- Maintenance Contracts
- Redd Counting
- Stocking Advice
- Stream Narrowing
- Survey Work
- Tree Clearing and Planting
- Weed Cutting



[www.casterbridgefisheries.co.uk](http://www.casterbridgefisheries.co.uk)

**John Aplin**

Email: [john@riverworks.co.uk](mailto:john@riverworks.co.uk)

Casterbridge Fisheries Ltd The Dairy House West Stafford, Dorset: DT2 8AL

Office-01305 257490 Mobile-07889 680464



[Shillingstone, Child Okeford – River Stour](#) (Satnav - DT11 0QZ) (available to Exchange Book holders)

**The Fishing:**

South bank – from Haywards bridge downstream two fields – approx 600 yards.

North bank – from Haywards bridge downstream for three fields – approx 1100 yards.

**The Species:**

Chub, roach, dace, perch, pike, eels, gudgeon and some grayling.



**The Season:**

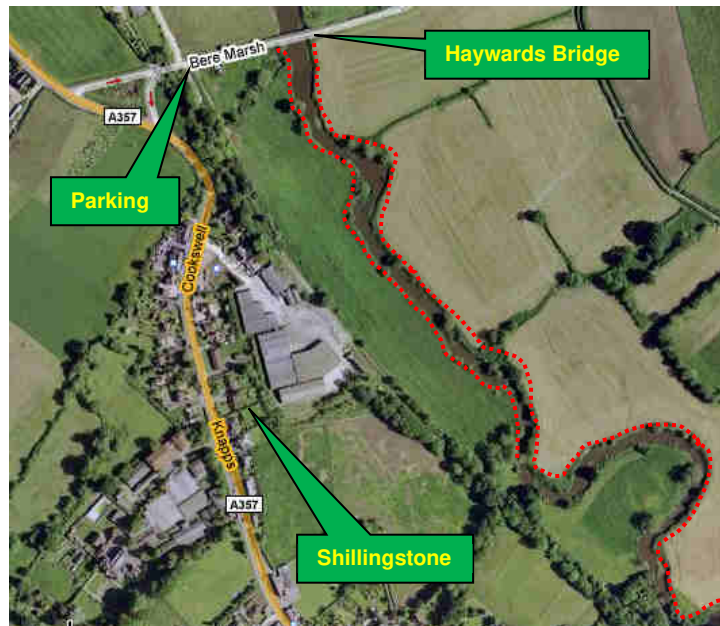
16 June to 14 March inclusive.

**Constraints:**

Keepnets allowed for Silverfish only. No camping; Leave gates as found; Avoid disturbing livestock.

**How to Get There and Where to Park:**

From Blandford, take A350 to Durweston Cross. Turn left onto A357 to Shillingstone. Drive through the village and take the first right to Child Okeford (Haywards Bridge). Parking is available before going under the bridge (payable) or there are a couple of free spaces by the pumping station on the right before the river or on the left over the bridge. Walk down the track next to the railway line for south bank fishing or walk up the road over the bridge (100 yards) & climb over the fence for north bank fishing.



[Chesil Farm, Little Hanford - River Stour](#) (Satnav - DT11 0SY) (available to Exchange Book holders)

**The Fishing:**

North bank only – commencing approx 50 yards upstream of the footbridge, downstream to where woods reach the waterside. Approx 1300 yards.

**The Species:**

Chub, roach, dace, perch, eels, gudgeon and pike.

**The Season:**

16 June to 14 March inclusive.

**Constraints:**

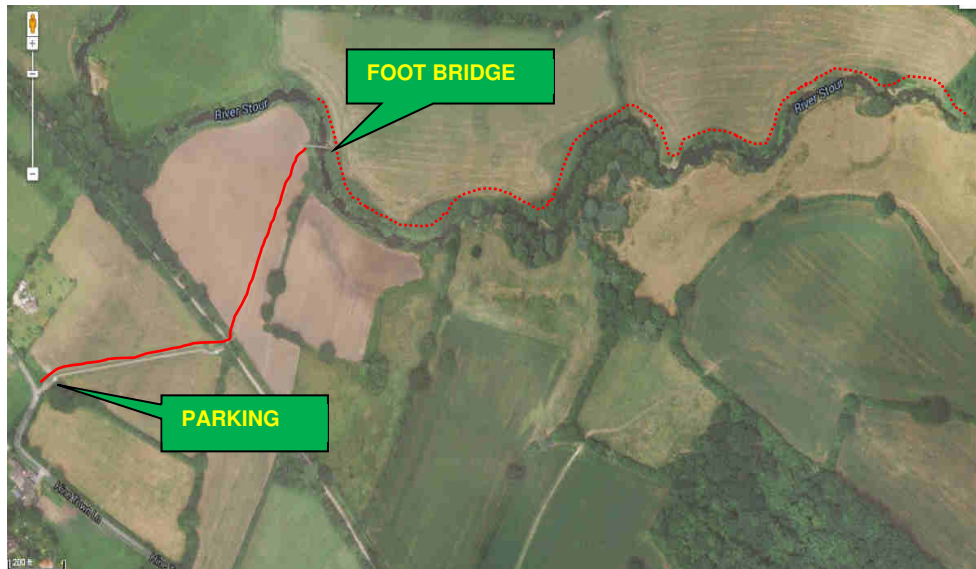
No camping.

Keepnets allowed for Silverfish only. Leave gates as found. Do not obstruct access to private premises in Honeysuckle Gardens, etc.

Note: This stretch is immediately downstream of the Shillingstone (Childe Okeford) section and access is obtainable to and from the Shillingstone, Haywards Bridge section.

**How to Get There and Where to Park:**

From Blandford, take A350 to traffic lights at Durweston Bridge. Turn left onto A357 to Shillingstone (3 miles). In village, turn 2nd right after speed limit boards into Hine Town Lane to roadside parking near Honeysuckle Gardens (next to 5 bar gate). Pass thru the gate, follow the footpath exiting onto a bridleway. Cross over the bridleway, through gateway, across the field, over the river using footbridge.



**Hanford Farm, Hanford – River Stour** (Satnav - DT11 8HN) (available to Exchange Book holders)

**The fishing:**

North bank only commencing approx 150yds upstream of the footbridge, downstream for 4 fields to the start of the woods.

**The species:**

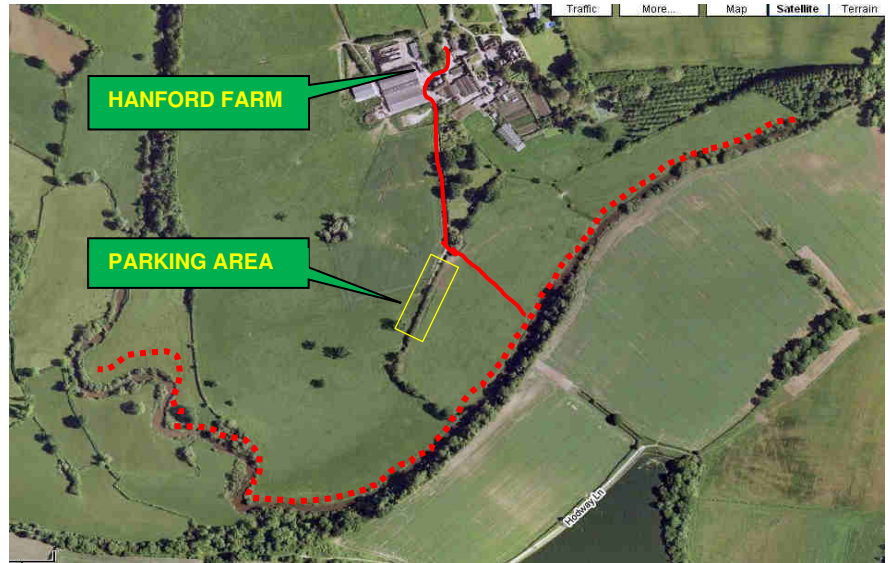
Chub, roach, dace, perch, bream, pike, gudgeon & eels.

**The season:**

16th June to 14th March inclusive.

**Constraints:**

Keepnets allowed for Silverfish only. No camping. Please leave all gates as found. Avoid disturbing live stock and crops.



**VERY IMPORTANT NOTICE - PARKING:** For security reasons the main farm gates will be locked at 9.00pm prompt. They will not re-open until 6.00am the following day. Members wishing to use the light summer evenings to fish on beyond 9.00pm must park outside the main farm gates on the grass verge.

**How to Get There and Where to Park:**

From Blandford, take A350 and cross the traffic lights at Durweston Bridge. Through Stourpaine take the next left signed Child Okeford. Approx 1 mile along the road look for sign 'Hanford Farm & School', turn left and follow the road leading into the farmyard, bear right, then left & pass through the 2 stage metal gate(s), drive carefully along the track, at the end of the track, pass through the double 5 bar gate on the right & park 'sensibly' anywhere along this track. Access to the river is available from either end of this track.

**PLEASE LEAVE ALL GATES AS FOUND. THE TRACKS CAN BE VERY MUDDY & UNEVEN AT TIMES.**

## Somerset Levels Association of Angling Clubs (SLAAC) Waters (Langport)

Rivers Parrett, Isle & Brue (Satnav - TA10 9PN) (NOT available to Exchange Book holders)

### **The Fishing:**

DDAS have rights to fish the stretches indicated by the dotted lines on the map on these excellent rivers situated close to **Langport**, Somerset **at no extra charge**.

### **The Species:**

Carp, Tench, Perch, Bream,  
Roach, Rudd, Chub, Pike, & Eels.

### **Main Season:**

16 June to 14 March inclusive.

### **Constraints:**

Keepnets ARE NOT allowed

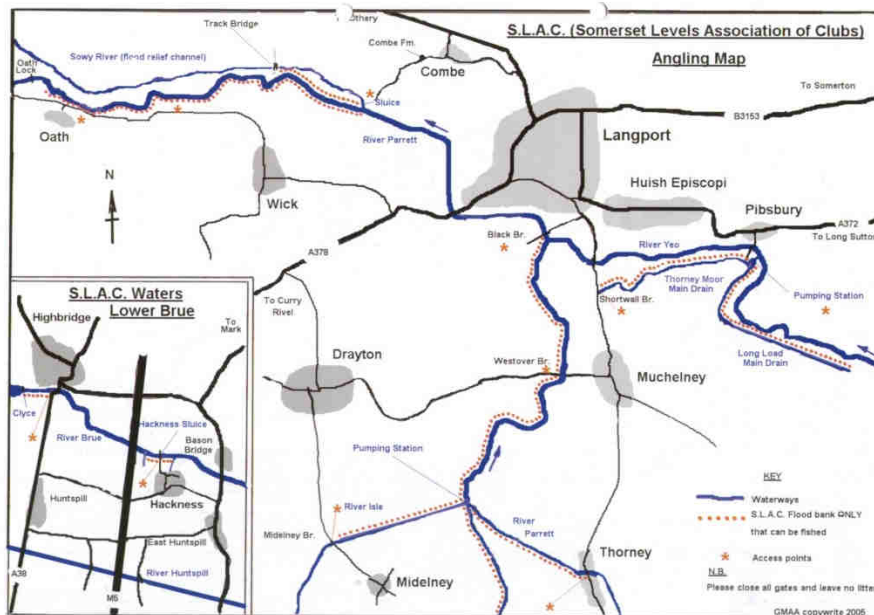
Leave no litter.

Close all Gates.

Avoid disturbing livestock & crops.

Please Note:

**CURRENT MEMBERSHIP CARD  
MUST BE CARRIED AND  
PRODUCED ON REQUEST.**



## **WARNING**

**BEWARE OF OVERHEAD POWER CABLES ON PARTS OF THESE WATERS.  
"NO FISHING WITHIN 30 Metres OF EACH SIDE OF THE CABLES"**



# ALAN'S ANGLING

24 CASTERBRIDGE EST

01305 520359 LONDON RD, DORCHESTER DT1 1PL 07886 352011

DT1 1PL

**The newest tackle shop in South Dorset with  
modern and fresh ideas serving all anglers in the  
local area**

Stocking all new items from:

NASH, FOX, ESP, PRESTON, MIDDY, DRENNAN, KORDA,  
GURU, GARDNER, TRAKKER, KRYSTON, SHIMANO, STORM,  
JACKPYKE, LEEDA, WYCHWOOD, MAP, TFG, DAIWA, NGT,  
KAMASAN, VARDIS, CCMOORE, MAINLINE, DYNAMITE,  
MARUKU, BAITECK, CBS BAITES & MANY MORE

Fresh live bait available daily.

Opening Times: Mon-Fri: 9am till 6pm. Sat: 8.30am till 6pm.

Website: [alansangling.co.uk](http://alansangling.co.uk)

Email: [alanwimpy@hotmail.com](mailto:alanwimpy@hotmail.com)

ebay shop: [alansangling](http://alansangling)

Or join us on facebook for daily specials & local information on  
events, matches and promotions run by alansangling.

**10% off all tackle to members of DDAS**

A locally family run business with friendly & knowledgeable  
staff.

We will do our best to price match any genuine item available  
just come in and ask., be good to see you!!

**AC** West Bay **ANGLING CENTRE WEST BAY**  
WWW.ANGLINGCENTREWESTBAY.CO.UK TEL: 01308 421800



JOIN US ON FACEBOOK

**MASSIVE RANGE OF CARP, COURSE, SEA, GAME, BOAT,  
FLY, PREDATOR TACKLE FOR ALL YOUR FISHING NEEDS.**

**FROZEN, LIVE AND PRESERVED BAIT AVAILABLE**

**AMPLE FREE PARKING**

**OPEN ALL YEAR 7 DAYS A WEEK**

**THINKING OF PURCHASING OR UPGRADING EQUIPMENT  
SPEAK TO US BY PHONE OR EVEN POP INTO THE STORE  
TO GET OUR VERY BEST PRICE.**

# 10% DISCOUNT

**FOR ALL DDAS MEMBERS ON PRESENTATION  
OF VALID MEMBERSHIP CARD**

**10A West Bay Bridport Dorset DT6 4EL**

## Wool Manor, Wool – River Frome (Satnav – BH20 6BL) (available to Exchange Book holders)

### **The Fishing:**

North bank only (river flowing right to left) – commencing one field upstream of Wool Manor. The field between the old and new road bridges and downstream of the new bridge to the fence line. Access to the upstream section is through the farmyard next to the Manor. Total length approx 1600 yards.

### **The Species:**

Grayling, Dace, Roach & some Carp, Bream perch and pike.

### **The Season:**

From the 1st November to the last day of February (Note that the first Sunday in November is always a Match fishing date).

### **Constraints:**

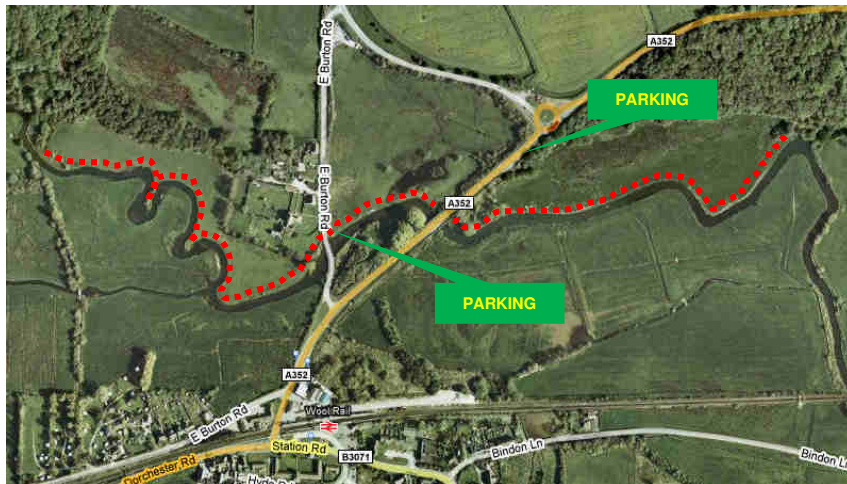
NO Keepnets. No camping. Leave gates as found.

Avoid disturbing livestock; Do not park in the Manor/farmyard, climb over, or walk around the closed gate.

All game fish accidentally caught must be returned alive immediately 'without photography'. NO spinning permitted (lure fishing for pike is permitted). NO gaffs to be carried to the water. NO Fly fishing.

### **How to Get There and Where to Park:**

From Wool village, head north over the level crossing onto the A352. Take the 2<sup>nd</sup> left for parking next to the Old Wool Bridge (closed for vehicles), or continue on the A352 and park in the Lay-by slightly beyond the road bridge on the right. Do not block the A352.



## Worgret Hill, Nr Wareham - River Frome

(Satnav – BH20 6BL)

(available to Exchange Book holders)

### **The Fishing:**

North bank only (river flowing right to left) from where a drain enters the river, down to the fence line where the 'PRIVATE FISHING' (SCOTT ESTATE) sign is sited (see dotted line on map). Total length: approx 1200yds.

### **The Species:**

Grayling, dace, roach and pike.

### **The Season:**

1st November to the last day of February.

### **Constraints:**

NO Keepnets. No camping. Leave gates as found.

Avoid disturbing livestock.

All game fish caught must be returned alive immediately. NO spinning permitted.

NO gaffs to be carried to the water.

NO Fly fishing.

### **How to Get There & Where to Park:**

Worgret Hill is on the A352 at about ½ a mile before Wareham and 4 miles east of Wool. Access is straight off the A352 at the top of the hill onto an angled narrow gravel track (not easy to see). After 300yds the track goes under the railway bridge and bends to the left. Park on the side of the track next to gate leading into the field (do not obstruct the track), there is room for 4 or 5 cars.

**Please Note: The Track leading down to the railway bridge can be difficult to navigate at times of bad weather (high camber). Also, great care must be taken when returning onto the A352 because visibility is not good and the traffic is often going fast.**



# Local Independent Locksmiths

**C&S**  
**Locksmiths Ltd**



- CAR KEY DUPLICATION
- COMMERCIAL, AUTO & RESIDENTIAL
- BOARDING UP SERVICE
- LOCKS SUPPLIED & FITTED TO BS3621
- SAFES SUPPLIED & FITTED
- uPVC DOOR LOCKS & SYSTEMS
- ALL TYPES OF KEY CUTTING
- CCTV & ELECTRONIC DOOR ENTRY
- MASTER KEY SYSTEMS
- FREE SURVEYS & QUOTATIONS



**24 HOUR EMERGENCY CALL OUT 1HR RESPONSE**

WHERE POSSIBLE

**Freephone:**  
**0800 118 22 74**

**Tel: 01305 787474**

**NO CALL OUT CHARGE**

[www.cslocksmiths.co.uk](http://www.cslocksmiths.co.uk)



## Club Exchange Books

DDAS have an Exchange Book agreement with other Angling Clubs in Dorset & Somerset.

These are:

**Sturminster & Hinton AA:**

[www.s-haa.co.uk](http://www.s-haa.co.uk)

**Ilminster AA:**

[www.ilminsteraa.co.uk](http://www.ilminsteraa.co.uk)

**Blandford & District AC:**

[www.blandfordangling.co.uk](http://www.blandfordangling.co.uk)

**Gillingham & District AA:**

[www.gillinghamanglingclub.co.uk](http://www.gillinghamanglingclub.co.uk)

**Glaston Manor AA:**

[www.fishinginsomerset.com](http://www.fishinginsomerset.com)

**Frome & District AA:**

[www.fadaa.uk](http://www.fadaa.uk)

### How to get one:

Exchange Books can be ordered via the Clubmate System/App directly or via the DDAS Website: <https://dorchesterdistrictanglingsociety.clubmate.co.uk/register> They can then be digitally signed out for a maximum 1 day. Proof of this booking is confirmed on your phone & can be used to show bailiffs of the water you are visiting.

They can also be ordered manually via the Membership Sec' for those who don't / can't use Clubmate. Email: [membershipsec@d-das.com](mailto:membershipsec@d-das.com) for details. These are available for up to 7 days if required (including return postal time). They can be collected/returned by hand after making arrangements with the Membership Sec'.

NOTE: You will be required to surrender your DDAS membership card for the duration.

Failure to return the Exchange Book without due reason within the specified time, may result in that member being disqualified from use of this facility for the remainder of the DDAS year.

**Higher Kingcombe Farm Lakes - Toller Percorum** (available to Exchange Book holders).

**THIS AGREEMENT IS INITIALLY FOR THE 2024/25 CLUB YEAR ONLY**

### **The Fishing:**

Members have free use of Lodge Lake, Lakes 1,2,3 & the 2 Island Lake only.

In addition, DDAS Members may fish the Specimen Lake for 24hr at the rate of £15 (or £10 for a day session).

Night fishing on Lakes 1,2 & 3 will be charged at the current fishery rate (Landlord/lady will confirm).

### **The Species:**

LODGE LAKE:-

Crucian/Mirror/Grass/Common Carp (17lb+), F1s, Roach, Perch (4lb+), Bream/Skimmers, Rudd, Chub and Eels.

2 ISLAND LAKE:- Specimen Carp, Bream, Tench and some other coarse fish.

Specimen Lake:- Larger Carp to 30lb+.

Other Lakes:- General coarse fishing.



**Main Season:** Open all year (with the exception of the first 7 days of January each year).

### **Constraints:**

**MEMBERS MUST SIGN IN, IN THE HUT ADJACENT TO CATTLE GRID ON ARRIVAL**

**LODGE LAKE:** Fishing may only take place between sunrise to 30 minutes after sunset or 10pm, whichever is the earlier.

**2 ISLAND LAKE:** Night Fishing is allowed by DDAS Members for a **maximum of 48hrs during any 72hr period.**

Parking as per the plan attached. Keepnets allowed 'for silver fish only' at the Fishery owners discretion (lay out net on the bank for 45 mins before use).

Please use barbless hooks only. No Fixed Lead Rigs (Safety Lead Clip System is acceptable). No tins, fires, litter or camping. Dogs permitted if a DDAS dog licence is held.

**Use unhooking mats for all fish unhooked on the ground**, unhooking fish from within a landing net held off the ground (between your legs) & returning immediately is permissible. Members under 16 must be accompanied by a senior member/adult. Please leave all gates as found. Avoid disturbing livestock. SEE FISHERY NOTICE BOARD FOR ANY ADDITIONAL SPECIFIC CONSTRAINTS.

(continued)

## Higher Kingcombe Farm Lakes - Toller Percorum (continued)

### **How to Get There and Where to Park:**

Exit Dorchester on to the A37 (Yeovil Road). Just beyond Grimstone, turn left onto the A356 Crewkerne Road. Pass through Maiden Newton, up the hill and continue until you reach the Road sign on the Left: 'KINGCOMBE / POWERSTOCK', turn left, carefully follow the road round and down the hill to the crossroads. Turn left, Higher Kingcombe Farm is 400 yards on the right.

Park in the Lodge Car Park (or in the Farmyard before the cattle grid if the Lodge is fully occupied), or in the lower car park if fishing the lower lakes.



## **'OUR VERY OWN'**

**Luckfield Lake - Broadmayne, Dorchester** (NOT available to Exchange Book holders)

**The Fishing:** DDAS are the proud owners of this lake. PLEASE SIGN THE LOG ON ARRIVAL. RECORD YOUR CATCH ON DEPARTURE. **LOCK**

**COMBINATION IS No. ON THE REVERSE OF YOUR MEMBERSHIP CARD**

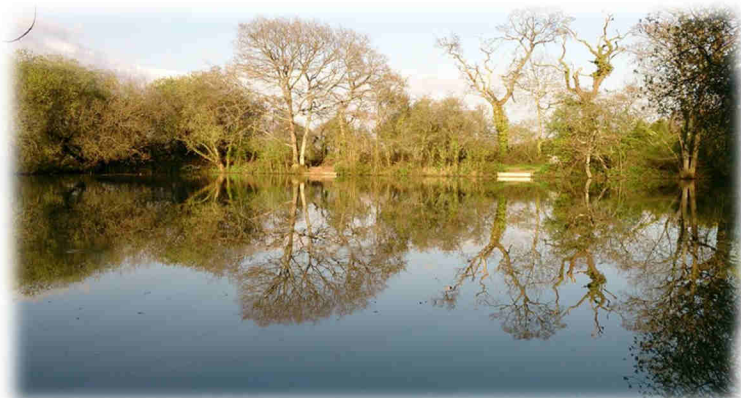
**Species:** Carp, F1s, Tench, Roach, Rudd, Bream, Barbel, Perch & Eels.

**Main Season:** Open all year.

### **Opening Times:**

**Daytime Fishing:** Between **Dawn & 10.00pm**, or one hour after sunset, whichever is the earlier.

**Night-time Fishing:** Bookable 24hr sessions on Tuesdays, Thursdays & Saturdays are available, but **ONLY** via the Clubmate App. A maximum of 2 sessions may be booked. **DO NOT JUST TURN UP & FISH, YOU WILL BE ASKED TO LEAVE.**



**WHEN NIGHT FISHING: SIGN IN & OUT AT ALL TIMES. ACCESS TO & FROM THE LAKE IS ONLY TO BE MADE DURING DAYLIGHT HOURS.**

### **Constraints:**

Keepnets are **NOT** allowed (except in controlled matches). Barbless hooks only. No nuts, pulses or Beans.

3 rods are allowed but **only** when there is a maximum of 4 anglers (*including yourself*) fishing at the same time. Please respect other members fishing areas at all times. A 3 rod EA Rod Licence is required when using 3 rods.

No Bivvies (except during 24hr booked sessions). No Fixed Lead Rigs (Safety Lead Clip System is acceptable). No guns, fires or radios at any time, Dogs allowed if a DDAS dog licence is held. The bookable 24hr sessions are only available on: **Tuesday, Thursday & Saturday ONLY**, pegs: **1,2 & 3 ONLY** from 5.30pm on the day unless the peg/swim is free beforehand. Pleasure anglers are to vacate a booked peg by 5pm. No metal drink or bait cans to be taken onto the site. Use only the 10 swims provided. **No stalking between swims.** No braided main line (hook lengths allowed, minimum length: 12").

Primary members must be accompanied by a senior member, junior members allowed unsupervised.

**Use suitable unhooking mats for all fish unhooked on the ground, if specifically targeting the larger carp, you are now (2025 on) required to carry & use a landing net of 36" minimum diameter.** Unhooking fish from within a landing net held off the ground (between your legs) & returning immediately is permissible.

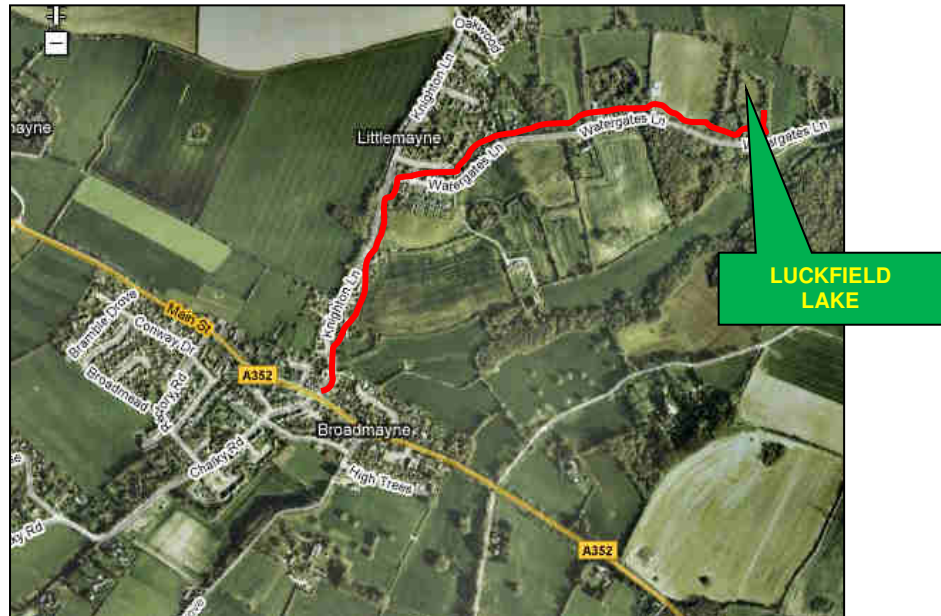
(continued)



## [Luckfield Lake - Broadmayne, Dorchester \(continued\)](#)

### How to Get There and Where to Park

From the A35 in Dorchester, take the A352 west. At the MaxGate Roundabout, take the 3rd exit and stay on the A352. Go straight over the next roundabout. After 2.5 miles, arrive at Broadmayne. Turn left (opposite the old garage) onto Knighton Lane, after 0.3 miles, turn right into Watergates Lane. Follow the lane for 0.5 miles. Please drive carefully at 10mph (uneven road). Look for the Luckfield Lake sign on the left adjacent to a 5 bar metal gate just beyond the row of cottages. Drive **FORWARD** up the track to the **ANGLED** parking spaces, please park as close as possible to the next car and tuck in to allow maximum use of the space available. Long vehicles (not estate cars) may park where stated on the signs displayed. There is not a disabled parking space. **Parking elsewhere is strictly forbidden.** Please lock & scramble the gate combination on entry & exit.



## Silverlake Dorset - Lysander Lake & Lucy's Pool - Warmwell, Dorchester (Satnav - DT2 8BT)

(Available to Exchange Book holders)

### **The Fishing:**

DDAS have almost\* exclusive rights to these newly created lakes on the Silverlake (sustainable holiday homes) development site at Warmwell.

*\*Owners/guests/renters of properties on the estate will have access to 5 swims on any given day, they will carry a permit to fish.*

### **Species:**

**Lysander Lake 2.95 acres:**

Mirror/Common/F1 Carp, Perch, Bream, Roach, Hybrids & Rudd.

**Lucy's Pool 1.1 acres:** Common & Mirror Carp.



### **Main Season:**

Open all year round except for the first 7 days of each year.

**Opening Times:** Fishing only between **8.00am (UFN)** and **10.00pm** until further notice, main gates locked at **10.00pm**, or one hour after sunset, whichever is the earlier. Lifesaving equipment available, please do not remove or tamper with it unless required in an emergency.

**Constraints:** **Unauthorised vehicles are NOT permitted beyond the turning point.. see note over page.**

No stalking between swims, fish from platforms only (or below when levels are low). Keepnets are NOT allowed, except in organised matches. Barbless hooks only. No nuts (of any kind) or Beans. Boilies allowed as hook bait only. Maximum of 2 rods per person. No guns, fires, radios, picnics or camping. Dogs allowed if DDAS dog licence held & they are not left to wander around. No metal drink or Bait cans to be taken onto the estate. No bivvies. No Fixed Lead Rigs (*Safety Lead Clip System is acceptable*). No braided main line (hook lengths allowed: 12" minimum). Members under 16yrs must be accompanied by a senior member. **Use suitable unhooking mats for all fish unhooked on the ground.** Otherwise from a landing net held between legs off the ground.

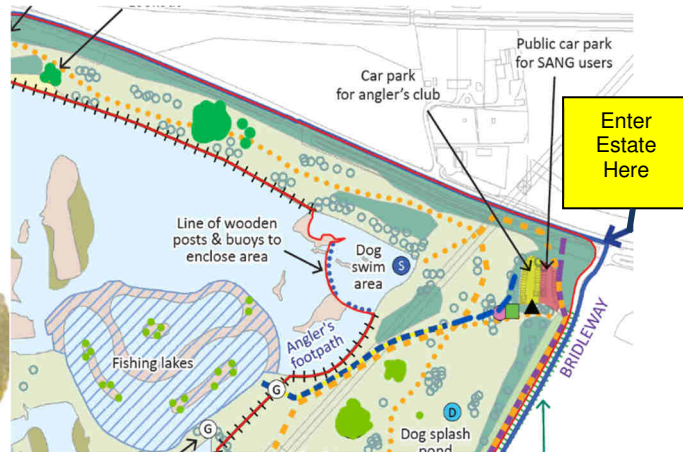
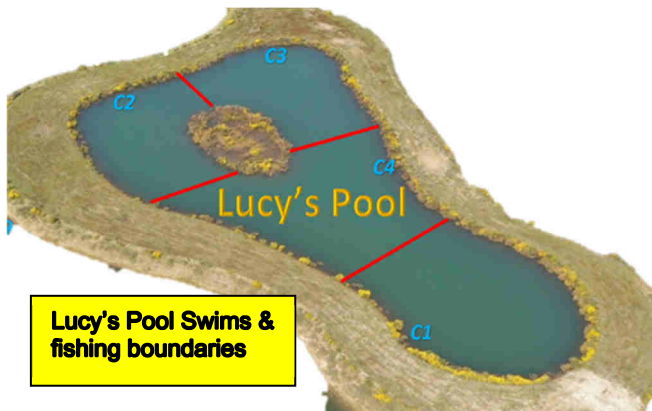
**LUCY'S POOL ONLY:** You are now (2025 on) required to carry & use a landing net of 36" minimum diameter on this lake.

(continued)

## Silverlake Dorset - Lysander Lake & Lucy's Pool - Warmwell, Dorchester (continued)

### **How to Get There and Where to Park:**

Heading north from Warmwell to Crossways on the B3390, turn left at the start of the village (signposted West Stafford 3 / Dorchester 6). Continue on this road (unnamed) for approx 1,500mtrs. Turn left into the Silverlake estate (site entrance), after 100 mtrs, turn right into the public car park. Keep left and cross into the 'Anglers Car Park' (unlocking & locking the gate behind you, combination code on the reverse of your membership card), please park sensibly to ensure maximum use of the space.



**NOTE: Parking or unloading at the lakeside is permitted for Blue Badge holders & OAPs only. Strictly NO PARKING at the lakeside.** Walk along the pathway to the lake (approx. 275 mtrs). Unlock/re-lock the 2<sup>nd</sup> gate (with Private Fishing sign on it) and carry on to selected swim/peg. Please note the fishing boundaries on Lucy's Pool when others are fishing or arrive to fish.

**PLEASE TAKE ALL YOUR LITTER HOME & LOCK GATES BEHIND YOU.**

# **DORCHESTER TACKLE & GUNS LTD**

## **Angling Centre**

**Tackle**

**Guns**

**TACKLE : RODS : BAIT : AIRSOFT : MILITARY**  
***[www.dorchesteranglingcentre.co.uk](http://www.dorchesteranglingcentre.co.uk)***

### **WE STOCK:**

**FOX, KORDA, KRYSTON, MIDDY, NGt, ULTIMA,  
SENSAS, MAINLINE, CCMOORE, DYNAMITE  
BAITS, STAR BAITS, ABU GARCIA, SHAKESPEARE,  
PENN, MITCHELL, SIDEWINDER, STORM, RAPALA,  
BLUE FOX & MANY MORE TOP TACKLE & BAIT  
SUPPLIERS!**

**A LARGE SELECTION OF TOP QUALITY LIVE BAITS  
AVAILABLE, INCLUDING MAGGOT, WORM &  
FRESH RAG & LUG WORM (dug daily)**

**10% DISCOUNT to DDAS MEMBERS**

**QWIKFAST**  
CLOTHING & WORKWEAR

**EMBROIDERY  
& PRINTING**



- T-SHIRTS • POLO SHIRTS • JACKETS
- FLEECES • HOODIES • TROUSERS
- HI-VIS • FOOTWEAR • GLOVES
- COVERALLS • RAINWEAR • P.P.E.

& MUCH  
MORE

**CALL US**



Find us on:  
**facebook®**

**01305 263 444**

**Unit 1a, Poundbury West Ind Est Dorchester**

**WWW.QFCLOTHING.CO.UK || EMBROIDERY@QWIKFAST.CO.UK**

## [Revels Fishery - Cosmore, Nr Dorchester \(Satnav - DT2 7TW\)](#)

### **The Fishing;**

9 excellent Lakes over  
14 Acres.

**FREE FISHING FOR  
'FULL' MEMBERS OF  
DDAS** (*not guests or on  
an exchange book basis*)  
on production of current  
Membership card. Sign  
log on arrival. (The  
specimen lake is excluded).



### **The Species;**

Nineteen species of fish, many to specimen sizes, Carp to 30lb, pleasure bags to 200lb+ possible.

**The Season;** Open all year round.

### **Constraints;**

Check the fishery notice board before fishing  
for current rules and regulations.

### **How to Get There and Where to Park:**

Exit Dorchester onto the 'old Sherborne Road' (at the bottom of hill, behind the County Hall), stay on this road for approx 12 miles, pass (do not turn at) the sign for Buckland Newton (right). Carry on down the Hill. At the bottom, look for the sign on the right for the Fishery. Follow the track, book in at the Tackle Super Centre. Park in Car Park provided.

# Revels Tackle

**Situated on the site of the fishery!!**

**Open 7am to 8pm**

*All your tackle and bait needs are available.*

*(no need to stock up before you leave home)*

**Tel: 01300 345301**





2 St. Edmund Street, Weymouth, Dorset DT4 8AR

Tel: 01305 777771

**Email: [wac@weymouthangling.com](mailto:wac@weymouthangling.com)**

The team at WAC welcome DDAS members and look forward to fulfilling all your angling needs. Just show us your club membership card and we'll give you discount.

We strive to display as much stock as possible but if you don't see what you want please ask as we can order it for you at a very competitive price. Join our loyalty scheme and for every purchase over £5 in store get your card stamped and when its full we'll give you a £10 gift voucher.

Check out our website if you want to shop from the comfort of home.

**[www.weymouthangling.com](http://www.weymouthangling.com)**

## **Postcodes for Sat Nav use**

The postcodes provided are a guide to get you in the vicinity of a venue only (not exact):

<b>Shillingstone:</b>	<b>DT11 0QZ</b>
<b>Wool Manor:</b>	<b>BH20 6BL</b>
<b>Worgret:</b>	<b>BH20 6AD</b>
<b>Chesil Farm:</b>	<b>DT11 0SY</b>
<b>Hanford Farm:</b>	<b>DT11 8HN</b>
<b>Kingcombe:</b>	<b>DT2 0EH</b>
<b>Luckfield:</b>	<b>DT2 8HA</b>
<b>Silverlake:</b>	<b>DT2 8HU</b>
<b>Revels:</b>	<b>DT2 7TW</b>
<b>Sharnhill:</b>	<b>DT2 7DJ</b>
<b>Harbour Bridge:</b>	<b>DT3 4BQ</b>
<b>SLAAC Waters:</b>	<b>TA10 9PN</b>
<b>Potwell:</b>	<b>DT8 3QT</b>
<b>Todber Manor</b>	<b>DT10 1JB</b>





**Sharnhill Green Fishery ('Upper Lake ONLY'), Nr Alton Pancras** (Satnav - DT2 7DJ) (available to exchange book holders)

**The Fishing:**

A small, very pleasant Lake in open countryside.

**The Species:**

Mirror, Common & Crucian Carp to 15lb & some Tench & Roach.

**The Season:**

Open all year round for day fishing (the lake will be closed for the first 7 days of January each year).

**Constraints:**

Keepnets ARE NOT allowed.  
Check the additional rules and regulations on the fishery notice board before fishing.



**How to Get There and Where to Park:**

Exit Dorchester onto the 'old Sherborne Road' (at the bottom of the hill behind County Hall), stay on this road for approx 9.5 miles, turn right at the sign for Buckland Newton (top of Revels Hill). Carry on down the Hill for 1 mile. Take the **2<sup>nd</sup>** Right to Buckland Newton (Signposted: B3143). Follow this road for approx 500 metres then turn left onto Castle Lane (opposite the pink coloured house), follow this road for approx ½ a mile. At the white painted signpost for Bookham: Turn right, after 300 metres, turn left, follow the track, park in the car park (marked yellow) next to the lake.

*(continued)*

## Sharnhill Green Fishery ('Upper') (continued)



**CONCESSION FISHING ONLY: Harbour Bridge Lakes: 'Witch-Hazel, Lavender, Match & Mary Lakes', Coldharbour, Weymouth Satnav - DT3 4BQ (NOT available on Exchange book system)**

**PLEASE NOTE:** These lakes are not rented/leased by DDAS but you can fish them at a concession price of **£3 per day**

**The Fishing;** 3 x 2 acre & 1 x 1 acre adjoining Lakes with features & islands in open countryside.

**The Lakes & Species;**

Witch-Hazel:- Carp to 25lb,  
Roach, Rudd & Perch.

Lavender:- Tench (4lb+),  
Bream/Skimmers, Roach,  
Rudd & Perch

Mary:- Carp, Bream, Rudd  
& Tench.

Match:- Carp, Roach, Rudd  
& Bream.

**The Season;**

Open all year round for day  
fishing & day/night fishing,  
48hrs max' in one swim.



**Constraints;**

Barbless hooks only. 3 rods are allowed but a 2nd EA Rod Licence is required when using 3 rods, please respect other Anglers fishing. No guns, Dogs allowed if DDAS dog licence held, No fires, radios or camping. No metal drink or bait cans to be taken onto the land.

Fishery Keepnets allowed (see landlord on arrival). Use unhooking mats for all Carp over 5lb. Do not discard any fishing line on the bank. Braided hook-lengths are **NOT** allowed. **Please Take all your litter home.**

**How to Get There and Where to Park:**

At the Manor Roundabout (Weymouth Gateway, next to Morrison's supermarket) head north on the old Dorchester Rd (A354) for 0.7 miles, turn left onto Nottingham Lane, after 0.4 miles, turn left (signposted 'Chickerell 2 miles').

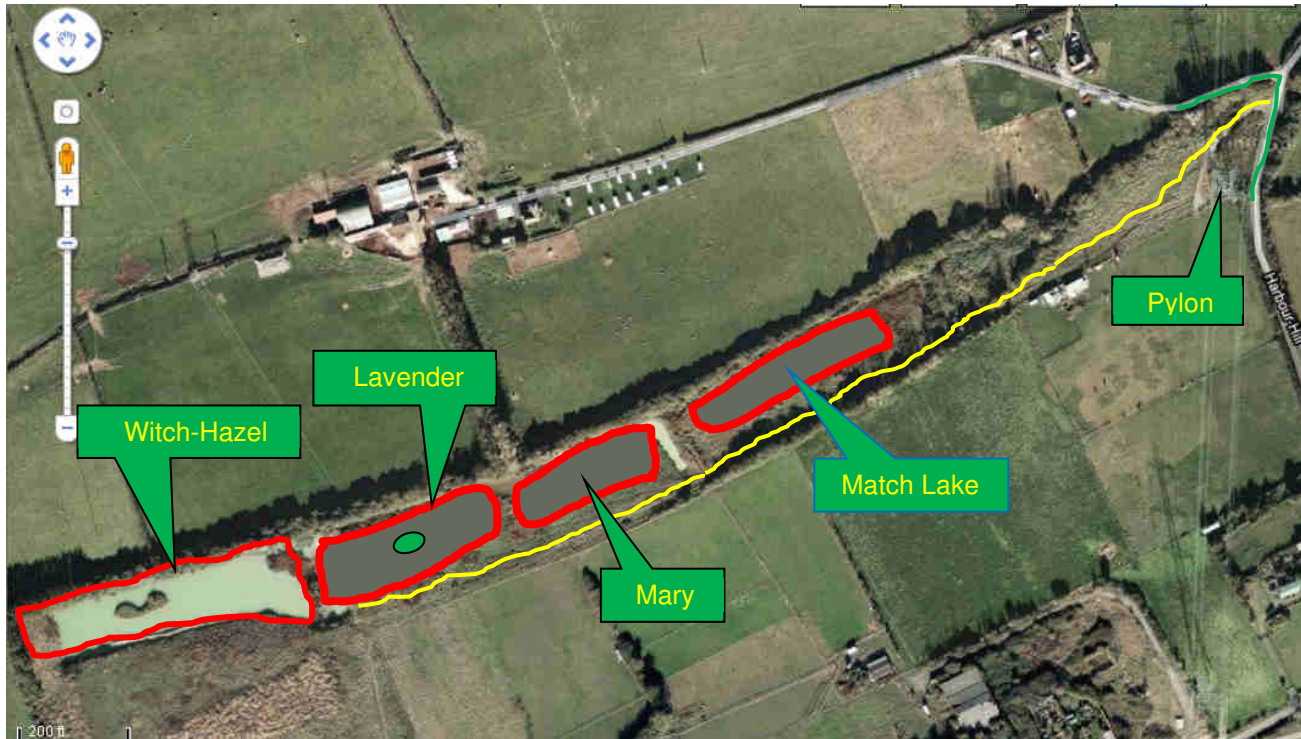
Continue along this road for 0.5 miles, when you reach the electricity pylon, turn right onto the track (not the lane). Enter DDAS code & drive to parking area adjacent to locked gate, DDAS members will not be issued with that lock No. You will need to walk to other lakes.

(continued)

Harbour Bridge Lakes: 'Witch-Hazel, Lavender, Match & Mary Lakes', Coldharbour, Weymouth  
(continued)

**WARNING**

**"Beware of overhead powerlines, please abide by the signs in place"**



### Potwell Lake – Broadwindsor (Satnav - DT8 3QT)

A Day ticket venue that DDAS members can fish 'Free of Charge' (NOT Available on Exchange book system)



**The Fishing:** A very attractive 1 acre lake in beautiful surroundings, with varied depths & lots of features.

**The Species:**

Carp (up to 18lb+), Roach, Tench, Bream/Skimmers & Perch.

**The Season:**

Open all year (with the exception of the first 7 days of January each year).

**Opening Times:**

Fishing only between **7.30am and 10.00pm** (*unless by prior arrangement by calling 07919091508*), or one hour after sunset, whichever is the earlier.

**Constraints:**

Keepnets are NOT allowed. Barbless hooks only.

No guns, dogs, fires, radios or camping.

No metal drink or bait cans to be taken onto the land.

Use unhooking mats for all Carp over 5lb.

No Fixed Weights, safety clip system allowed. No lead core leader/lead allowed.

Do not discard any fishing line (of any length) on the bank.

**"Please check any notices at the fishery for additional constraints"**

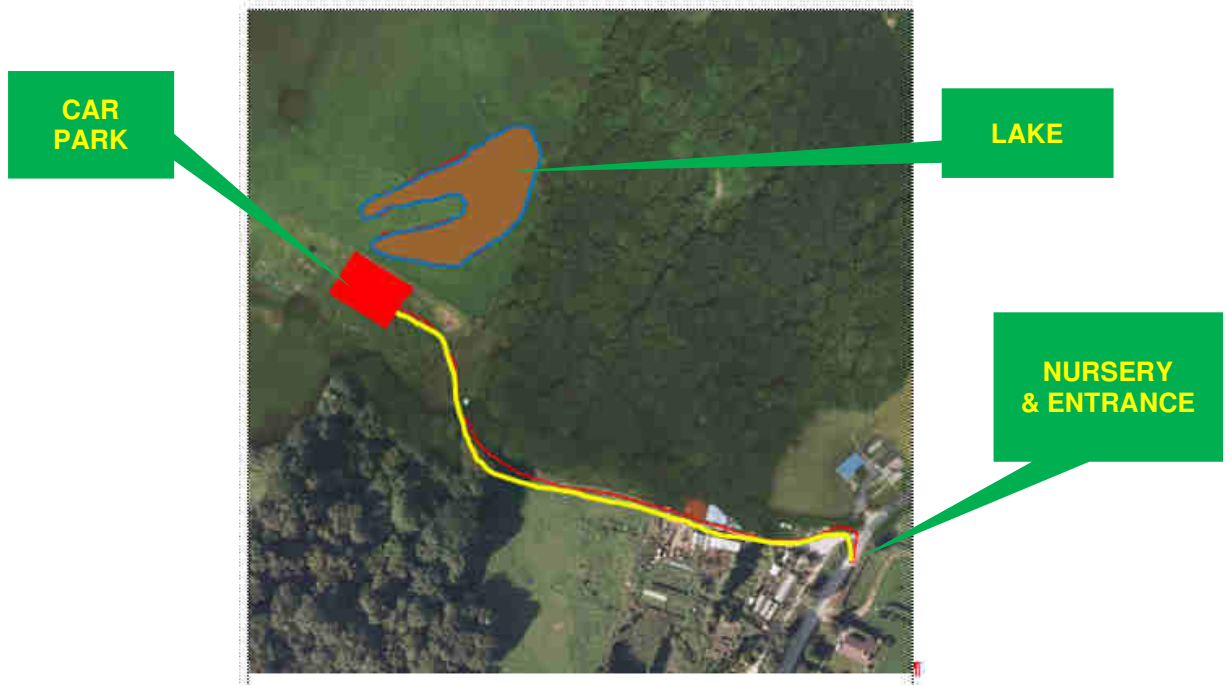
### **Potwell Lake – Broadwindsor (continued)**

#### **How to get there & where to Park:**

From Dorchester take the A37. At Grimstone, turn left onto the A356, continue on this road for approx 16 miles (passing the turning for Kingcombe). Take the left fork soon after the 'toller down gate' junction (road not signposted or named). After approx 3 miles, cross the road - dog legged. (signposted Broadwindsor & Crewkerne). After approx 3 miles, at the junction, turn right onto the A3066 (signposted 'Mosterton'). After approx half a mile, turn left onto the B3164 (signposted Broadwindsor 1.5 miles). After approx 1 mile, look for the 'Potwell Nurseries' sign on the right. The lake car park is through this entrance, straight on, follow the track to the car park close to the lakeside.

PLEASE sign in using the log book located in the hut adjacent to the car park (this is also a toilet).





Produced by:

